

CIMC **VANGUARD**

Aluminum Flatbed Trailer

DIMENSIONS

Weight (+ / - 3%) 8,800 lbs
8,400 lbs w/ Aluminum Wheels
Length / Width 48' x 102"
Upper Coupler 1/4" Hi Tensile Steel
Kingpin 30" From Nose



FRAME

80,000 lbs Distributed
55,000 lbs Concentrated in 4'
25.5" Deep Web in Center
Mechanically Fastened Continuous Mainbeam
4" Camber • 7" Wide Bottom Flange

SUSPENSION

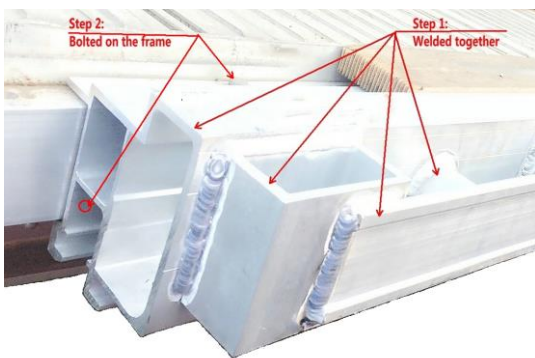
Axle Spread 122" Fixed
Lightweight Steel Wheels
Air Ride

SIDE RAIL

Bolt-on Aluminum Side Rail
Integrated Aluminum Winch Track on Both Sides
(12) Sliding Winches
Traditional Pockets and Spools
Stake Pockets 24" on Center

FLOORING

6061-T6 Extruded 3-1/8" Aluminum
(2) Wood Apitong Nailer Strips
Heavy Wall Extruded Aluminum
in Coil-Pack Area



INCIDENTALS

Four White Mud Flaps w/Logo
Registration Holder
Conspicuity Tape Installed
in Recess on Rub Rails
5-Year Limited Warranty

ELECTRICAL

7-Way Receptacle • Sealed Beam Lights
Concealed Wiring Harness • Wire Access on Corners